

# Maldives Explorer

 **Length:** 30m

**Cabins:** 8

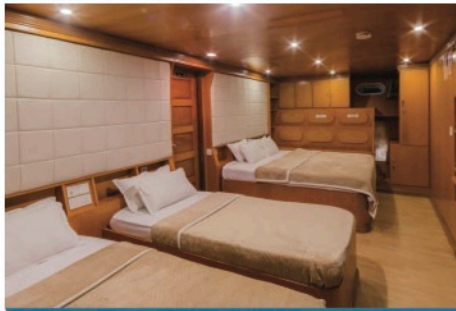
**Pax:** 16/22

 **Speed:** 14 kn

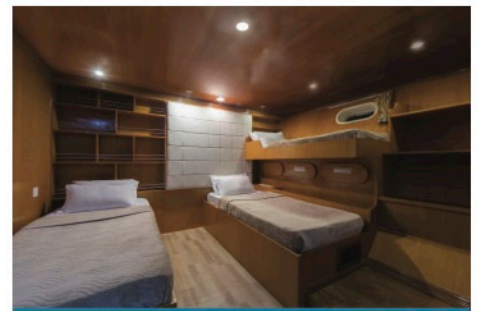
## CABINS



03 Seaview Suites



01 Family Quad Suite



04 Standard & 1 Standard Seaview

Total 8 airconditioned cabins, 4 standard cabins providing double / twin / triple accommodation on the lower deck, 1 family suite providing double / twin accommodation for 4 pax, 1 seaview standard cabin for double / twin accommodation and 2 seaview suites providing double accommodation. All cabins are air-conditioned with gorgeous interiors and trendy fittings and en-suite bathrooms with hot and cold water.



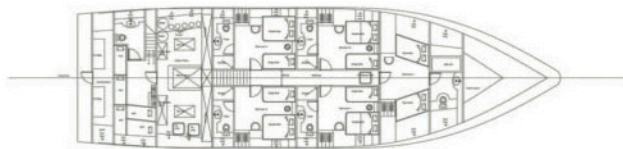
## SPECIFICATIONS

Vessel:	Wooden Hull (Tholan Timber with upper water linefully laminated with polished fiberglass)
Year Built:	2012 / Refurbished: 2018
Propulsion:	Hyundai marine diesel engine (M6D35TI 500PS/2000RPM)
Capacity:	Fuel: 6000 litres Fresh Water: 8000 litres
Desalinator:	Produces 10,000 litres per day
Navigation & Communication:	Samyung 36 miles marine radar system, Eco sounder, Compass, map, fish finder, GPS, CB Radio, mobile phones, internet, search light, binoculars
Power:	Genset 2 x HMG-70H

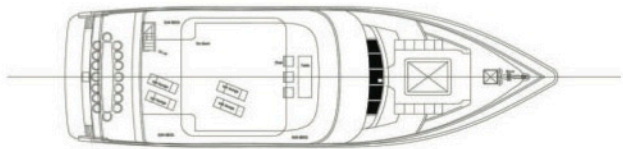
## FACILITIES



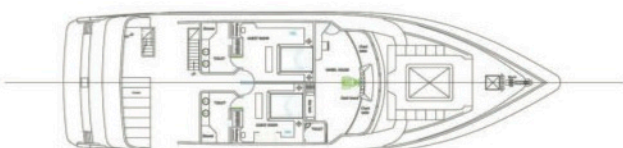
Spacious lounge deck, air conditioned saloon with restaurant and bar, sun deck with bar, 32 inch full HD TV and blu-ray disk player with surrounded speakers, with board games and multimedia library. Relaxation and seating areas in both front and back of the boat



LOWER DECK



SUN DECK



TOP DECK